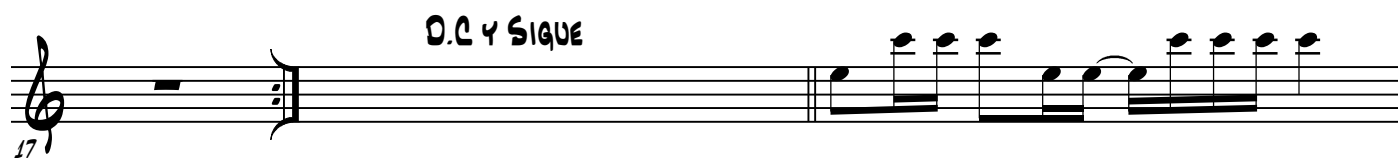


CARNAVAL

ALTO SAX.

EDGAR CASTILLO

829301-7007



CARNAVAL

2



Musical staff 1, starting at measure 37. It features a treble clef and a key signature of one flat. The melody consists of eighth and quarter notes with slurs and accents.



Musical staff 2, starting at measure 40. It features a treble clef and a key signature of one flat. The melody includes eighth notes, quarter notes, and a triplet of eighth notes.



Musical staff 3, starting at measure 43. It features a treble clef and a key signature of one flat. The melody is characterized by a continuous eighth-note pattern with slurs.



Musical staff 4, starting at measure 46. It features a treble clef and a key signature of one flat. The melody continues with eighth notes and quarter notes, ending with a double bar line.